

# DiSC® personality assessment

DiSC is the leading personal assessment tool used by over 1 million people every year to improve work productivity, teamwork and communication.

DiSC is a positive tool, aiming to help individuals increase in effectiveness as they identify and capitalise on their strengths, whilst recognising potential areas for development & blind spots.

## About DiSC

1. DiSC is a personal assessment tool used to improve work productivity, teamwork and communication.
2. DiSC is non-judgmental and helps people discuss their behavioural differences.
3. If you participate in a DiSC program, you'll be asked to complete a series of questions that produce a detailed report about your personality and behaviour.
4. The DiSC model provides a common language that people can use to better understand themselves and to adapt their behaviours with others. This can be within a work team, a sales relationship, a leadership position, or other relationships.

## What is the DiSC personality system?

Every person has distinctive characteristics and qualities, combining to influence their thinking, preferences and behaviour.

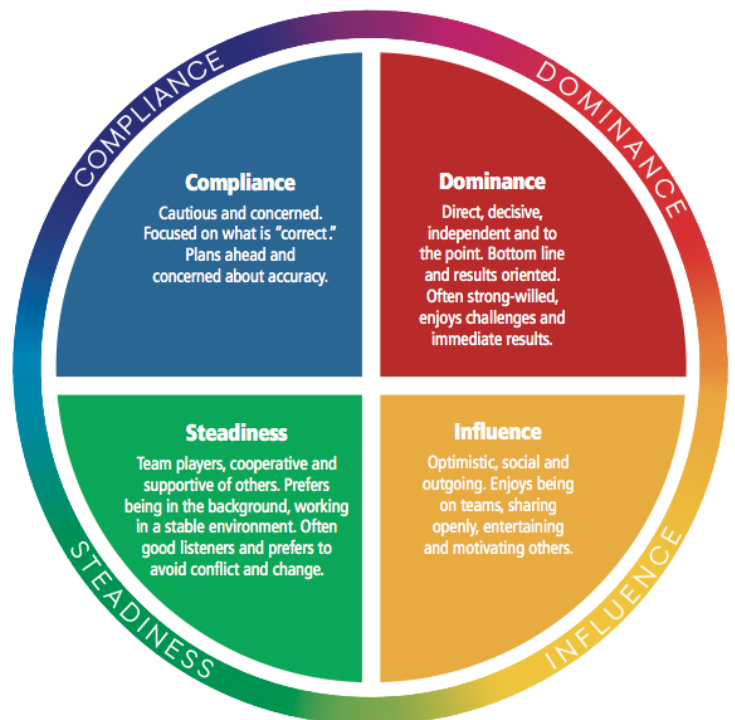
Over many years, research has shown that these behavioural characteristics can be grouped into four categories called personality styles and that people with similar personalities tend to exhibit specific traits common to that style.

The DiSC personality system was developed as a result of such studies and provides an accurate and neutral means of measuring the 4 factors from which DiSC derives its name.

## Benefits of DiSC

DiSC profiles help you and your team:

1. Increase your self-knowledge: how you respond to conflict, what motivates you, what causes you stress and how you solve problems.
2. Facilitate better teamwork and minimise team conflict
3. Develop stronger relationship and sales skills by identifying and responding to customer styles.
4. Manage more effectively by understanding the dispositions and priorities of employees and team members.
5. Become more self-knowledgeable, well-rounded and effective leaders.



Practical | Focused | Results-driven

[www.catalystld.co.uk](http://www.catalystld.co.uk)

0203 743 2323